

Maldives Land and Survey Authority,

MINISTRY OF HOUSING AND INFRASTRUCTURE

Ameenee Magu, Maafannu, Male', 20392, Maldives.

Office (PABX): +(960) 3004300, Fax: +(960) 3004254

Email: survey@mhe.gov.mv

Web: www.surveyofmaldives.gov.mv, www.mhe.gov.mv



CONTROL POINT DETAILS		Station Number	PSM 5022
Coordinate Information			
Geodetic		Grid	
WGS 84		UTM Zone 43	
Lat:	3° 58' 15.56050" N	E:	334138.4454m
Long:	73° 30' 11.23940" E	N:	439631.4251m
Ellp Height:		Orth Height:	1.032m
Island Name: K.Gulhigaathuhuraa (anantara)		Date:	8 th - 14 th December 2012

Monument description & method of survey:

- o Type A monument
- o PSM5022 is position using static GNSS surveying method.

General site condition & access:

- o PSM 5022 was established in the vegetation line of the island.
- o PSM 5022 is located near the diving school
- o PSM 5022 is located in an area which is easy to access and locate.

Owner: Deep Blue Pvt. Ltd



Bottom



North



East



Up



South



West

SITE INFORMATION

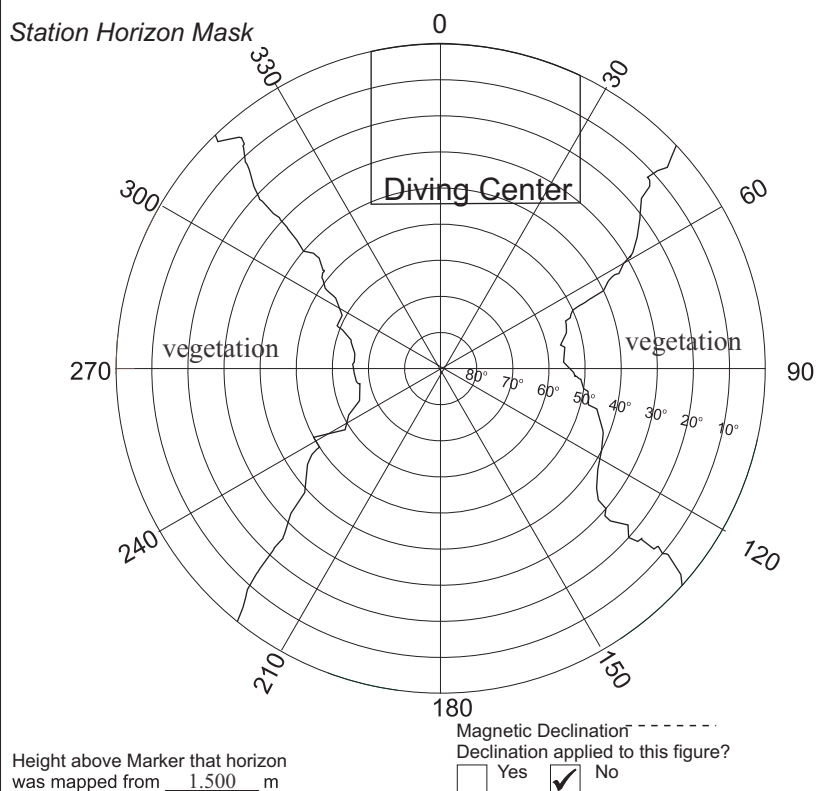
Station Number

P S M

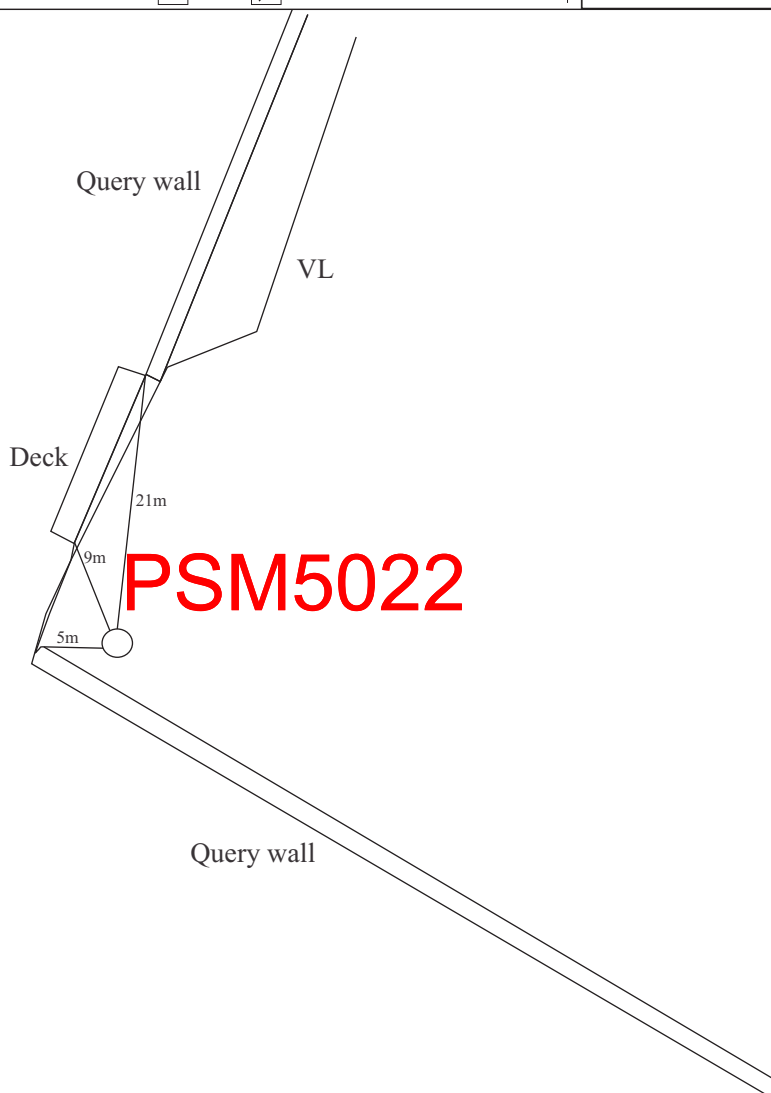
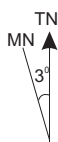
5 0 2 2

Station Horizon Mask

Locality



PSM5022



Sketched by: Abulho

Scale: Not to scale

Date: December. 2012

Maldives Land and Survey Authority,

MINISTRY OF HOUSING AND INFRASTRUCTURE

Ameenee Magu, Maafannu, Male', 20392, Maldives.

Office (PABX): +(960) 3004300, Fax: +(960) 3004254

Email: survey@mhe.gov.mv

Web: www.surveyofmaldives.gov.mv, www.mhe.gov.mv



CONTROL POINT DETAILS		Station Number	PSM 5023
Coordinate Information			
Geodetic		Grid	
WGS 84		UTM Zone 43	
Lat:	3° 58' 28.55361" N	E:	333694.3288m
Long:	73° 30' 07.35823" E	N:	439470.3075m
Ellp Height:		Orth Height:	1.204m
Island Name: K.Dhigufinolhu (anantara)		Date:	8 th - 14 th December 2012

Monument description & method of survey:

- o Type A monument
- o PSM5023 is position using static GNSS surveying method.

General site condition & access:

- o PSM 5023 was established in the vegetation line of the island.
- o PSM 5023 is located near water sport center
- o PSM 5023 is located in an area which is easy to access and locate.

Owner: Deep Blue Pvt. Ltd.



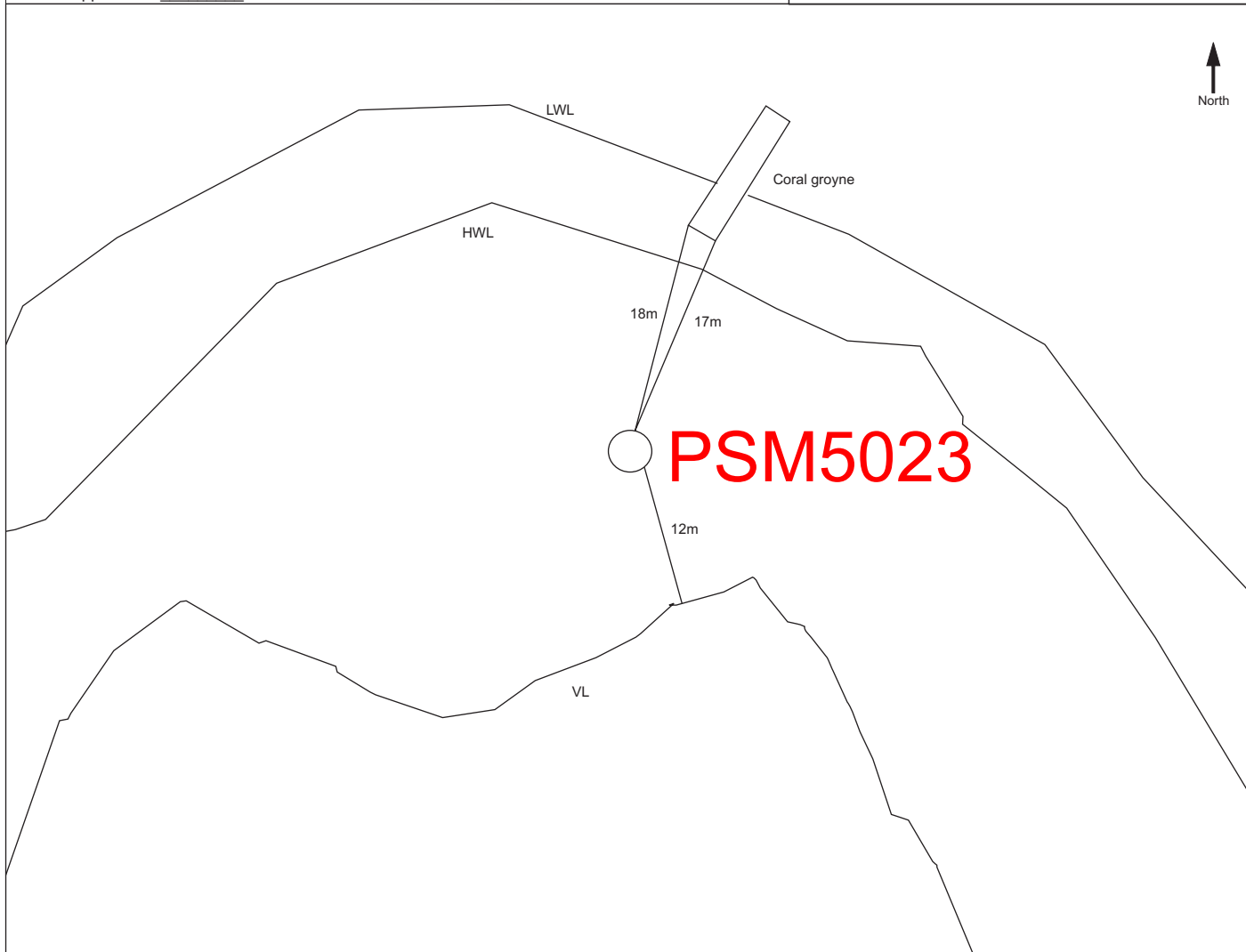
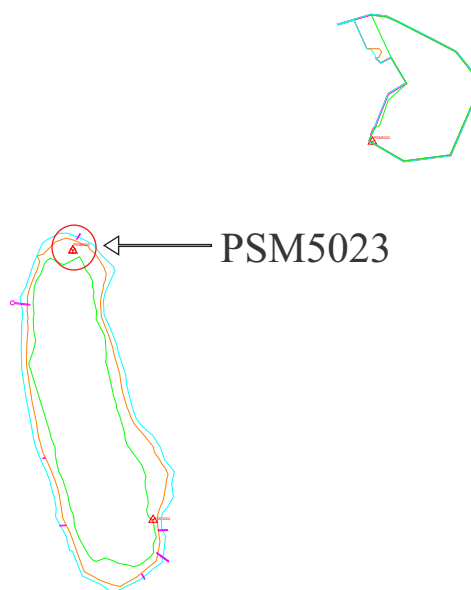
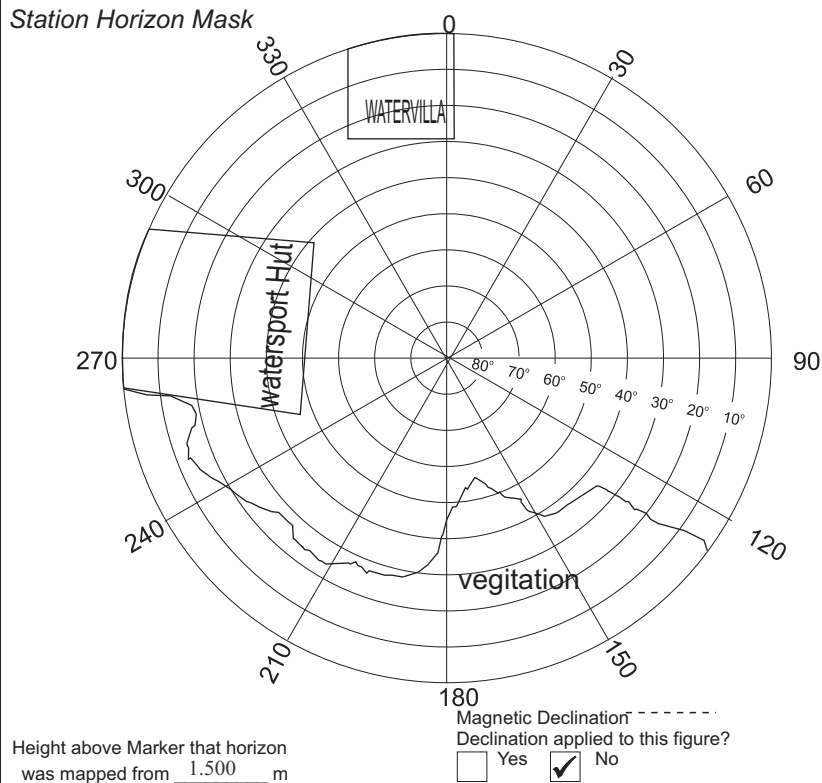
SITE INFORMATION

Station Number

PSM 5023

Station Horizon Mask

Locality



Sketched by: Abulho

Scale: Not to scale

Date: December. 2012

Maldives Land and Survey Authority,

MINISTRY OF HOUSING AND INFRASTRUCTURE

Ameenee Magu, Maafannu, Male', 20392, Maldives.

Office (PABX): +(960) 3004300, Fax: +(960) 3004254

Email: survey@mhe.gov.mv

Web: www.surveyofmaldives.gov.mv, www.mhe.gov.mv



CONTROL POINT DETAILS		Station Number	PSM 5024
Coordinate Information			
Geodetic		Grid	
WGS 84		UTM Zone 43	
Lat:	3° 58' 33.82538" N	E:	333813.3262m
Long:	73° 30' 21.74645" E	N:	439071.0110m
Ellp Height:		Orth Height:	0.982
Island Name: K. Dhigufinolhu (anantara)		Date:	8 th - 14 th December 2012

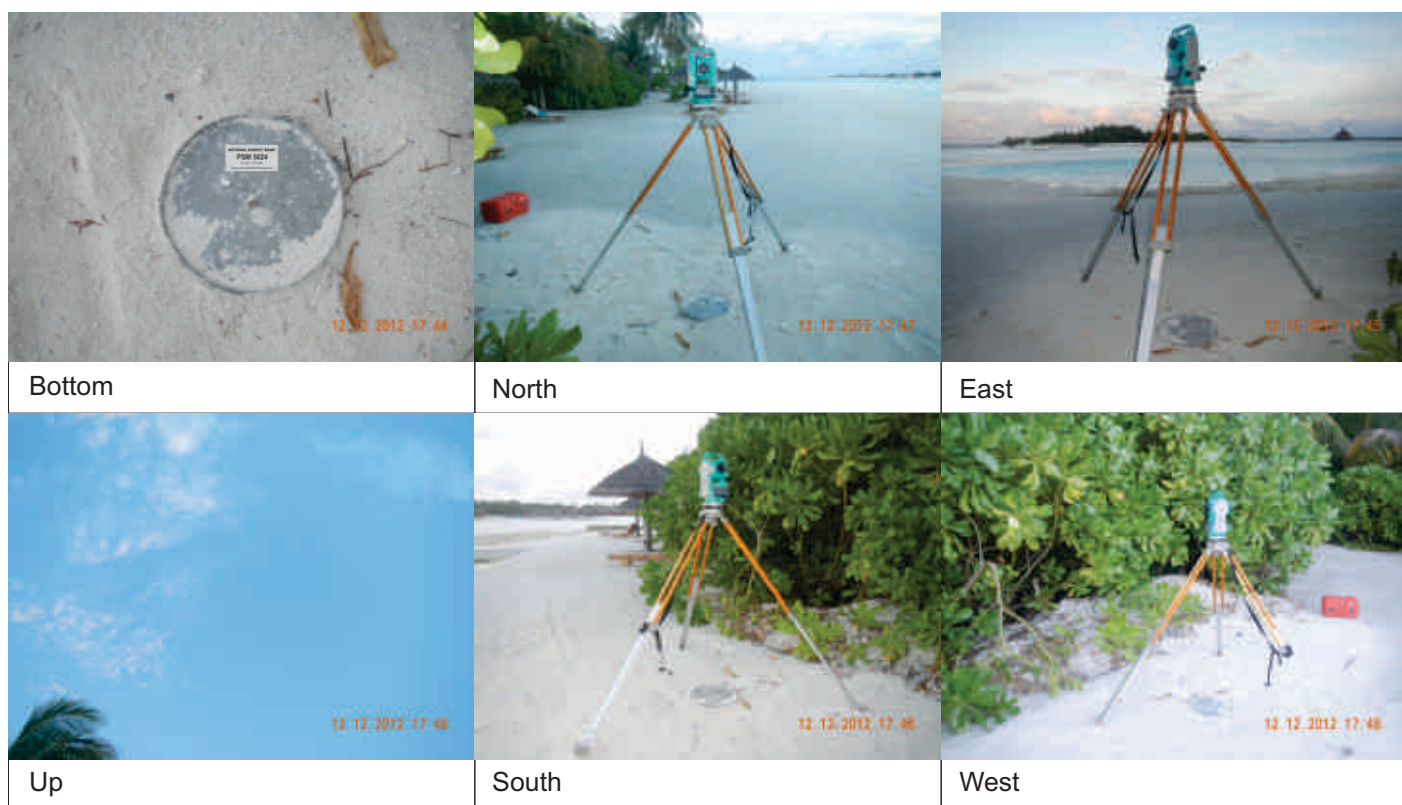
Monument description & method of survey:

- o Type A monument
- o PSM5024 is position using static GNSS surveying method.

General site condition & access:

- o PSM5024 was established in the vegetation line of the island.
- o PSM5024 is located near water sport of the island.
- o PSM5024 is located in an area which is easy to access and locate

Owner: Deep Blue Pvt. Ltd.



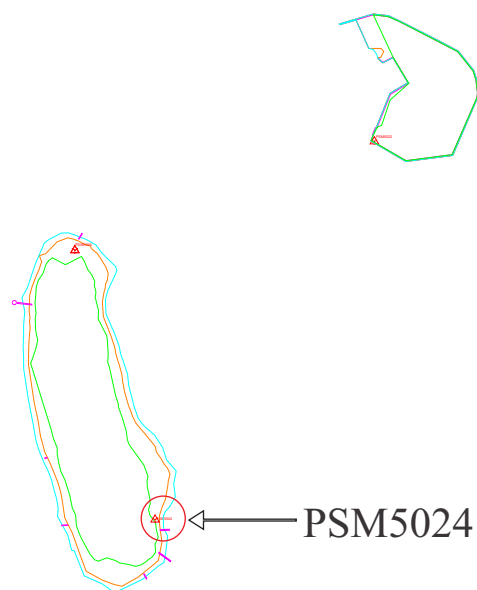
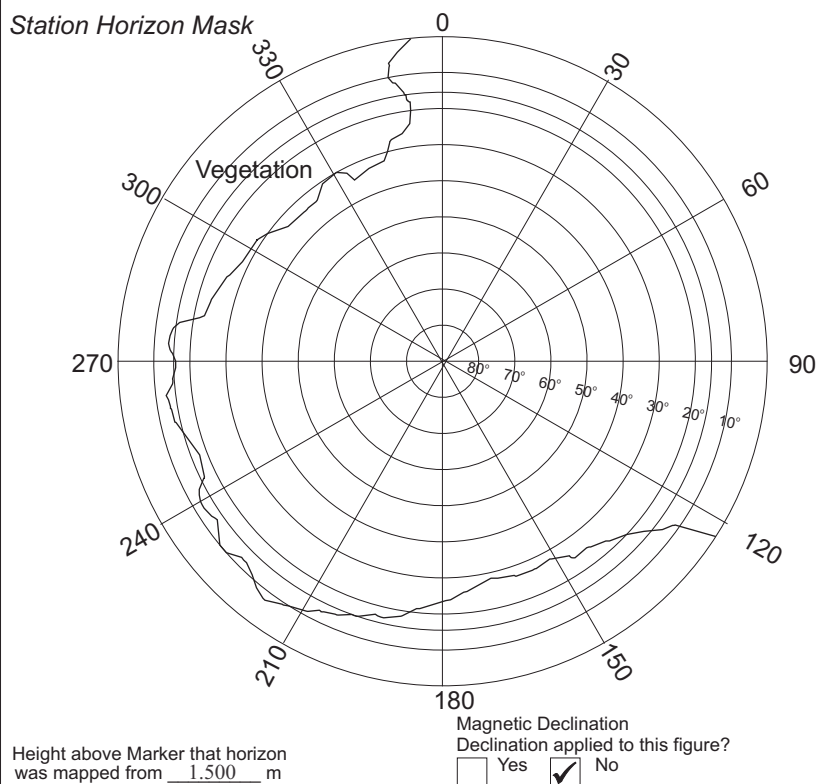
SITE INFORMATION

Station Number

PSM 5024

Station Horizon Mask

Locality



PSM5024

LWL

HWL

VL

3m

16m

25m

Coral groyne



Sketched by: Abulho

Scale: Not to scale

Date: December. 2012